



## DESIGNED BY

Kevin Boland

## CHARACTERISTICS

Elegant | Practical | Versatile

## COLLECTION

Named after the Italian town where the high tech ceramic tops are produced by Italian artisanal ceramic makers, the smooth ceramic tops contrast elegantly with the highly textured handcrafted woven bases to produce an interesting and beautiful combination for the eyes. Now available with HPCL tops as alternative table top treatment. The Pesaro collection of side and coffee tables are both practical and versatile accessories to any OHMM® collection, especially when combined in a curated mix of sizes.

## COMBINES WELL

Designed to complement all OHMM® collections or as an occasional / accent table.

# PESARO

## SPECS SHEET

### Side Table



### Coffee Table S



### Coffee Table L



### HPCL Top Example



## FINISHING OPTIONS

7 x 3mm Weave



Chalk



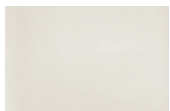
Natural



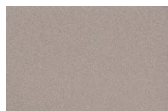
Titanium

## TABLE TOPS

CERAMIC

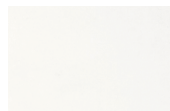


Chalk

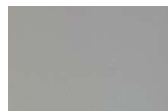


Taupe

HPCL



Marble



Slate

## ICONS



Optional  
Covers