



DESIGNED BY

Kevin Boland

CHARACTERISTICS

Curvaceous | Cocooning | Pampering

COLLECTION

The Tamaru day bed, complete with half moon side tables, takes on a natural form inspired by a shape of sea coves. Curvaceous and cocooning in design, the traditional caning weave style hints of tranquil bygone days. Perfect for curling up with a good book or loved one.

CUSTOMISATION

Choose your Rehau® fibre colour and Sunbrella® cushion colours to style it your way. Make the final statement with OHMM® Accent cushions.

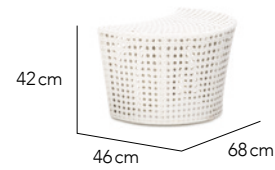
TAMARU

SPEC SHEETS

Day Bed



Half Moon Side Table



FIBRE

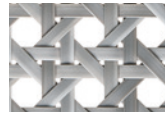
7mm Caning Weave



Marble



Chalk



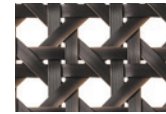
Clay



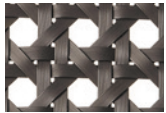
Sand



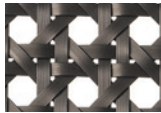
Natural



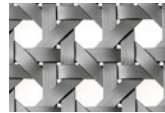
Java



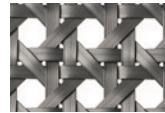
Mocca



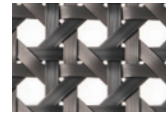
Bronze



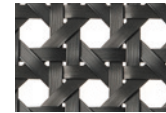
Silver



Platinum



Titanium



Carbon

CUSHIONS

For your options please see fabrics & cushions specs on www.ohmm.sg

Day Bed Back Cushions

45cm x 60cm | 18" x 24" (4 pcs)

35cm x 35cm | 14" x 14" (3 pcs)