



DESIGNED BY

Kevin Boland

CHARACTERISTICS

Angular | Robust | Distinctive

COLLECTION

The Inti sun lounger, with its distinctive angular legs, strikes a robust pose on the beach or by the poolside. Designed for superior comfort even without cushions and with an adjustable backrest that provides just the desired angle from flat to upright. Comes with matching side table for added convenience.

CUSTOMISATION

Choose your Rehau® fibre colour to style it your way. Cushions with Sunbrella® fabrics are optional. Add piping to your cushions for that clean refined look as well as a custom headrest cushion for ultimate comfort.

Sun Lounger



Side Table



FIBRE

7mm '1x1' Weave



Marble



Chalk



Clay



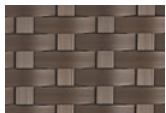
Sand



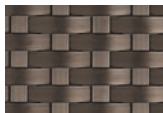
Natural



Java



Mocca



Bronze



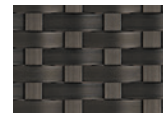
Silver



Platinum



Titanium



Carbon

CUSHIONS

For your options please see fabrics & cushions specs on www.ohmm.sg

ICONS



Optional Sun Lounger Headrests



Adjustable Backrests