



## DESIGNED BY

OHMM® Design Studio

## CHARACTERISTICS

Lightweight | Airy | Casual

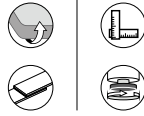
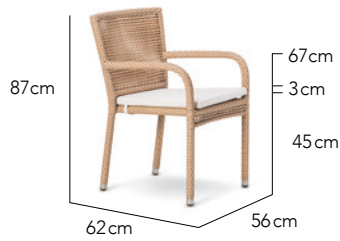
## COLLECTION

Simple styling with an open weave pattern gives the Beach collection a remarkable lightness and breeziness. Perfect for small spaces and balconies where a more relaxed unpretentious look is wanted.

## CUSTOMISATION

Table sizes are available to suit your space in 70cm, 80cm, 90cm and 100cm diameter sizes. Choose your Rehau® fibre colour and Sunbrella® fabrics to style it your way. Table top options include fully woven or fully woven with clear impact resistant tempered glass.

### Arm Chair



### Bistro Table



### FIBRE

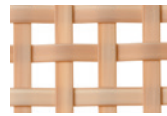
7 mm Open Weave



Marble



Chalk



Sand



Natural



Java



Mocca



Bronze



Silver



Platinum



Titanium



Carbon

### TABLE TOPS



Fibre Fully Woven



Fibre & Clear Glass

### CUSHIONS

For your options please see fabrics & cushions specs on [www.ohmm.sg](http://www.ohmm.sg)

### ICONS



Custom Sizing



Cushions Flippable



Optional Cushion Straps



Adjustable Gliders